

Select Map Contents

- EPA Facilities
- Water Monitoring Stations
- Boundaries
- Non-attainment Areas
- EJScreen Indexes (2021)
- Water
- Transportation
 - Airport Points
 - Airport Polygons
 - Railroads
- Places
- Critical Habitat
- NWI Wetlands
- FEMA Flood
- Land Cover

APN Address Street Intersection

3906 SOQUEL DR

Select Overlay

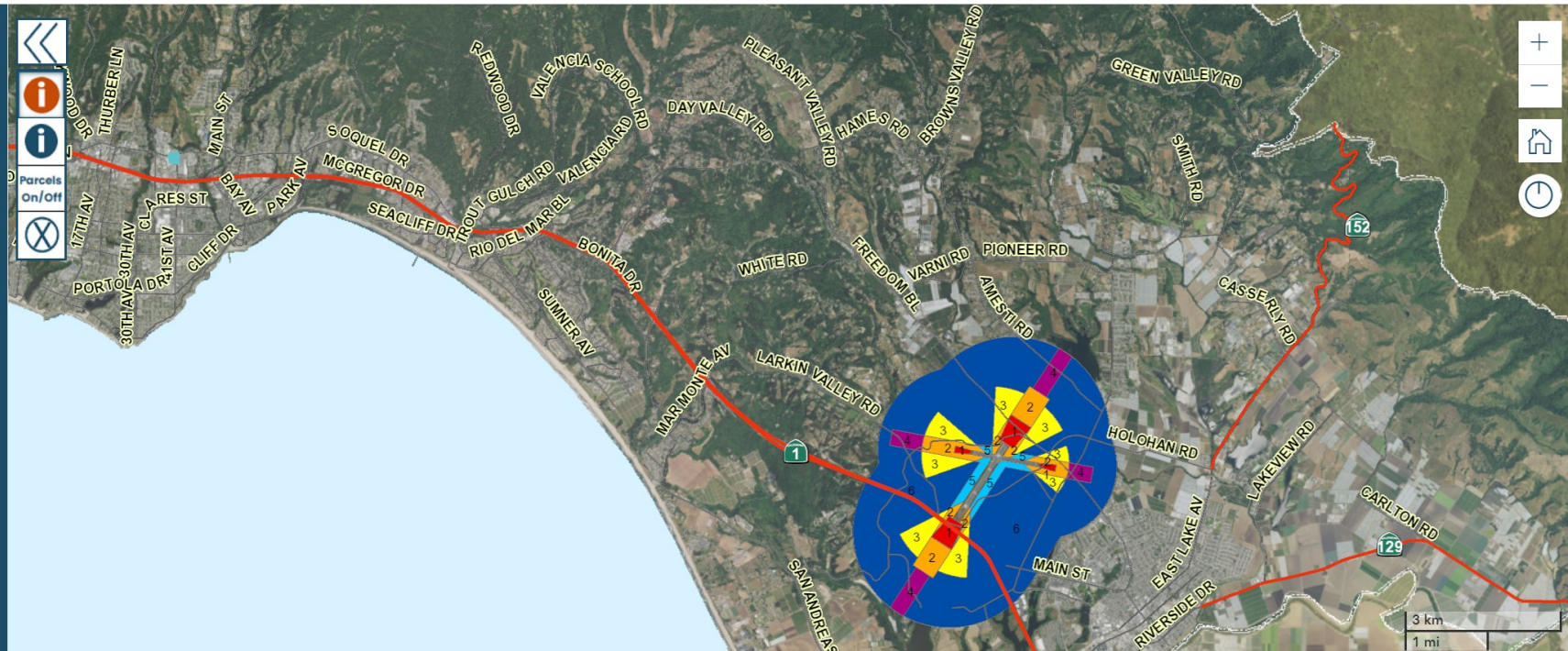
Select Base Map

Property Report

Zoning Report

Layer List Legend

- ▼ Layer List
 - ▶ Parcel Related
 - ▶ Transportation
 - ▶ Biotic Resources
 - ▶ Water Resources
 - ▶ Hazards
 - ▶ Geophysical
 - ▶ Zoning
 - ▶ CZU Info
 - ▶ Land Use
 - ▼ Land Use Regulatory
 - ADU parking exemption for transit proximity
 - Rodeo Gulch Cannabis Overlay – SCCC 7.128/13.10
 - Airport Safety Compatibility Zones
 - 6 - Traffic Pattern Zone
 - 5 - Sideline Zone
 - 4 - Outer Approach/Departure Zone
 - 3 - Inner Turning Zone
 - 2 - Inner Approach/Departure Zone
 - 1 - Runway Protection Zone
 - No Shoot Areas
 - ▶ General Plan



Close Parcel Info Land Use Biotic & Water Resources Special Districts Jurisdictional, Elections, & Census Hazards & GeoPhysical School Districts & CSAs OWTS Permitting

Parcel Information	Fault Zone	n/a	Fire Hazard Area	No
	DFIRM Pannel Number	06087C0352F	Geologic Unit	Qcl
Recorded Maps & Docs	Floodway	n/a	Mineral Designation	n/a
	Click Code for Flood Zone	n/a	Geologic Paleontologic	No
Select and Query Results	State Response Area	LRA	Mineral Resources	No
	High Fire Hazard Area	n/a	Mineral Class	MRZ-4

Ruler

Line Path Polygon Circle 3D path 3D polygon

Measure the distance between two points on the ground

Map Length: 10.02 Miles

Ground Length: 10.02

Heading: 108.76 degrees

Mouse Navigation Save Clear

